



Product Catalog

**on mounting systems
for PV farms**

Content

About the company	3
-------------------------	---

On-roof mounting systems

Mounting system for pitched roofs SRS-S	5
Mounting system for flat roofs SRS-F	6
Mounting system for flat roofs SRS-B (under the ballast)	7
Mounting system for flat roofs SRS-EW-B (East-West)	8
Mounting system for flat roofs SRS-102 EW (East-West)	9
Mounting system for flat roofs SRS-102 (under the ballast)	10
Mounting System for Flat Roofs SRS-B-LITE	11
Mounting System for Flat Roofs SRS-B-LITE-EW	12

On-ground mounting systems

On-ground mounting system SMS-212	13
On-ground mounting system SMS-212 SMART	14
On-ground mounting system for bifacial PV modules SMS-212L	15
On-ground mounting system SMS-212 EW (East-West)	16
On-ground mounting system SMS-211	17
On-ground mounting system with changeable tilt angle SMS-211C	18
On-ground mounting system SMS-312	19
On-ground mounting system SMS-402	20
Solar Carport	21
Agrophotovoltaic	22
Contacts	23



About the company

Solar Steelconstruction – is:

4000+ More than 4 000 MW of installed SPP

2000+ Own integrated manufacturing process with capacity of 2 GW a year

500+ MWp installation as EPC

**We export to more than
30 countries of the world:**

Solar Steelconstruction LLC

was founded in 2012 and based in Ukraine.
Today we are the largest manufacturer of
the mounting systems for PV sector in
Ukraine and Eastern Europe.

ISO 9001

ISO 14001

ISO 45001

SA8000

EN 1090 FPC certified

All steel structures are CE-marked





Mounting systems for PV farms

On-roof mounting systems for PV farms



On-ground mounting systems for PV farms



The equipment includes more than 400 profile sizes:



4 lines to cut the rolled steel with width 0,3-2 mm and 2-6 mm



Warehouses in different regions of Ukraine and Europe



Over 160 units of equipment to process metal, including stamping, cutting, welding



9 profile rolling lines to manufacture over 400 standard sizes of the most common types of profiles



Hot dip galvanizing bath

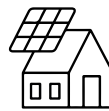


Plasma & Laser cutting centers; CNC Drilling & Grinding centers



All premises are equipped with overhead cranes and crane beams with a load capacity 5-20 tons

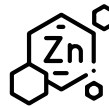
On-roof mounting system for the pitched roofs SRS-S



The mounting system is designed for installing solar PV modules on a pitched roof.



Fast installation at an optimal price thanks to simple connection without the need for additional components. A reliable system with resistance to loads.



Zinc coating is the key to the durability of the PV farm.



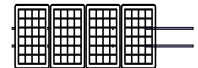
Characteristics:

Angle of inclination of the PVM	15° – 60°
Angle of inclination of the roof	up to 60°
Type of attachment to the roof	Anchored

Possible PV modules orientation:

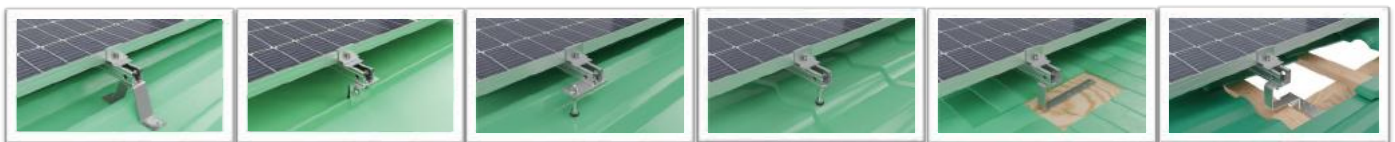


Landscape



Portrait

Fasteners of the PVM that depend on the roof covering:



Trapezoidal sheeting

Standing seam tile

Trapezoidal sheeting

Metal tile

Bituminous tile

Ceramic tile

The main connection nodes:



The main node



Screw



End fastening



Mid fastening



Rail with connection element

Constituent elements:



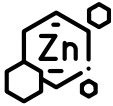
On-roof mounting system for the flat roof SRS-F



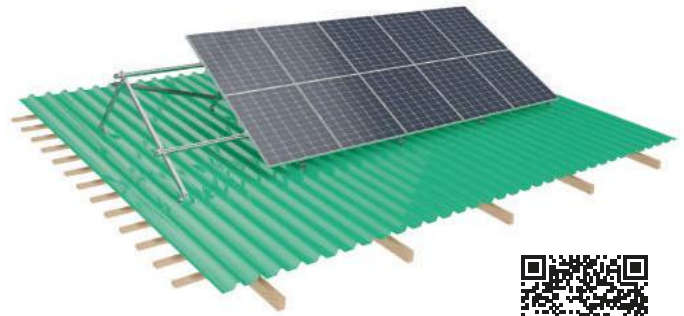
This on-roof mounting system is designed for the installation of PV modules on the flat roofs with the punch holes and damage the roof covering.



Fast installation at an optimal price thanks to simple connection without the need for additional components. A reliable system with resistance to loads.



Zinc coating is the key to the durability of the PV farm.



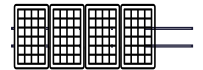
Characteristics:

Angle of inclination of the PVM	up to 45°
Angle of inclination of the roof	up to 10°
Type of attachment to the roof	Anchored

Possible PV modules orientation:

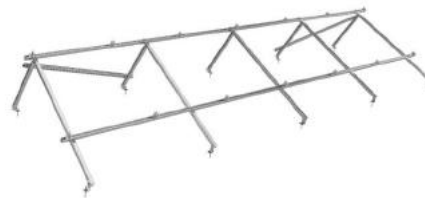


Landscape



Portrait

The constituent elements from the angle of inclination required for generation:



The main connection nodes:



The main node



Screw



End fastening



Mid fastening



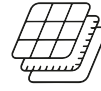
Rail with connection element

Constituent elements:

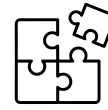


On-roof mounting system for the flat roof SRS-B

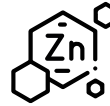
under ballast



Ballast on-roof mounting system is a solution for roofs in which it is undesirable or impossible to punch holes or damage the coating. Frames with ballasts are a feature of the configuration.



Fast installation at an optimal price thanks to simple connection without the need for additional components. A reliable system with resistance to loads.

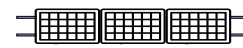


Zinc coating is the key to the durability of the PV farm.

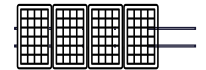
Characteristics:

Possible PV modules orientation:

Angle of inclination of the PVM	up to 45°
Angle of inclination of the roof	up to 10°
Type of attachment to the roof	Under ballast



Landscape



Portrait

The constituent elements from the angle of inclination required for generation:



The main connection nodes:



End fastening



Mid fastening



Rail with connection element



Ballast nodes

Constituent elements:



On-roof mounting system for the flat roof SRS-EW-B

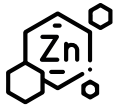
East-West



PV modules installation on the flat roof with East-West orientation allows to use the area most effectively as well as to distribute the electrical loads during the day.



Fast installation at an optimal price thanks to simple connection without the need for additional components. A reliable system with resistance to loads.



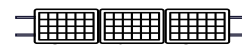
Zinc coating is the key to the durability of the PV farm.



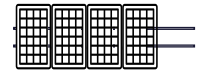
Characteristics:

Possible PV modules orientation:

Angle of inclination of the PVM	up to 15°
Angle of inclination of the roof	up to 10°
Type of attachment to the roof	Anchored / Under ballast



Landscape



Portrait

The constituent elements from the angle of inclination required for generation:



The main connection nodes:



End fastening



Mid fastening



Rail with connection element



Ballast nodes

Constituent elements:



On-roof mounting system for the flat roof SRS-102 EW

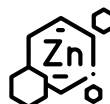
East-West



PV modules installation on the flat roof with East-West orientation allows to use the area most effectively as well as to distribute the electrical loads during the day.



Less metal consumption and simpler logistics. No need for additional components. A successful system with direct access to load.



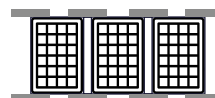
Zinc coating is the key to the durability of the PV farm.



Characteristics:

Angle of inclination of the PVM	up to 20°
Angle of inclination of the roof	up to 10°
Type of attachment to the roof	Anchored / Under ballast

Fixation options:



On the short side



On the long side

Brackets:

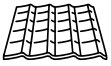


Constituent elements:



On-roof mounting system for the flat roof SRS-102

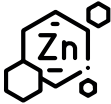
under ballast



The on-roof mounting systems is designed for the installation PV modules on the flat roof.



Less metal consumption and simpler logistics. No need for additional components. A successful system with direct access to load.



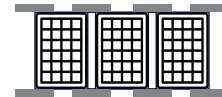
Zinc coating is the key to the durability of the PV farm.



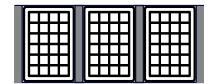
Characteristics:

Angle of inclination of the PVM	up to 20°
Angle of inclination of the roof	up to 10°
Type of attachment to the roof	Anchored / Under ballast

Fixation options:

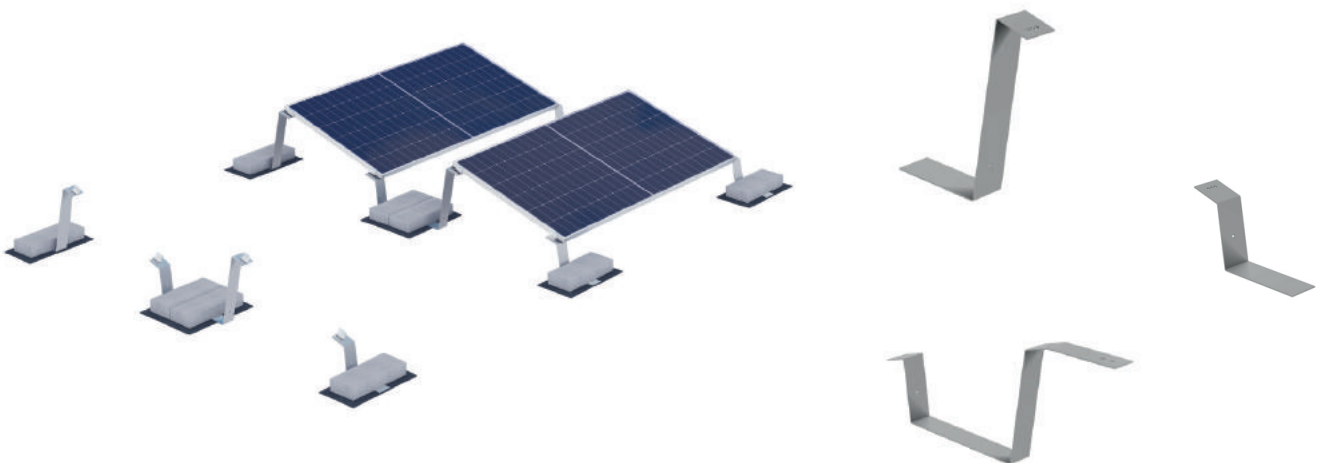


On the short side



On the long side

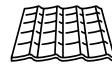
Brackets:



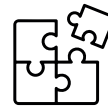
Constituent elements:



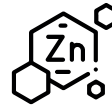
Mounting System for Flat Roofs SRS-B-LITE



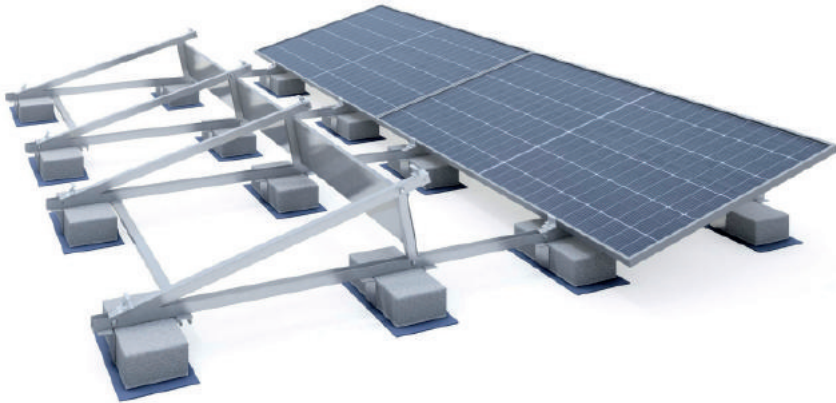
The mounting system is designed for installing solar power modules on flat roofs.



Less metal consumption and simpler logistics. No additional components required. Reliable system with load resistance.



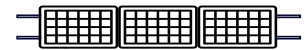
Zinc coating ensures the longevity of the solar power plant.



Characteristics:

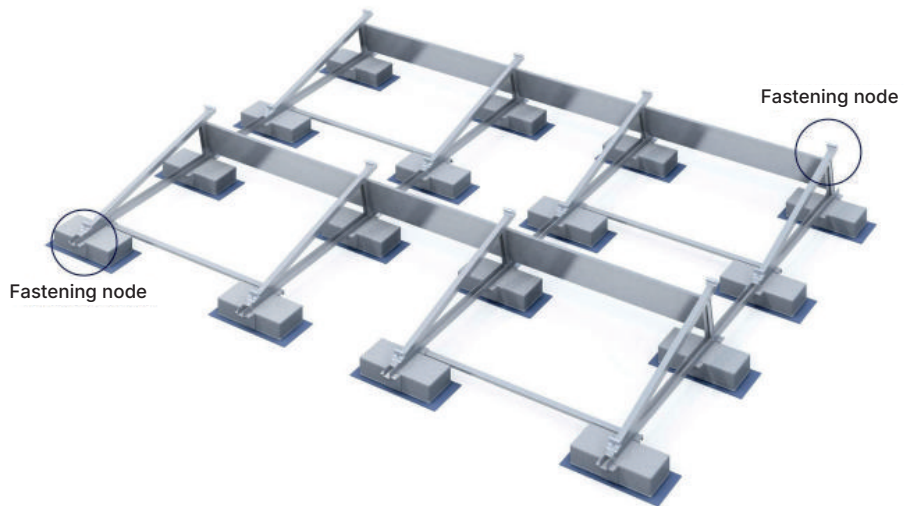
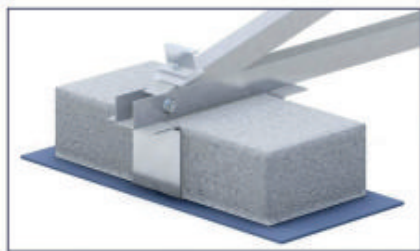
Angle of inclination of the PVM	Up to 20°
Angle of inclination of the roof	Up to 10°
Type of attachment to the roof	Ballast-mounted

Fixation options:



Landscape

Brackets:



Constituent elements:



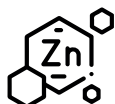
Mounting System for Flat Roofs SRS-B-LITE-EW



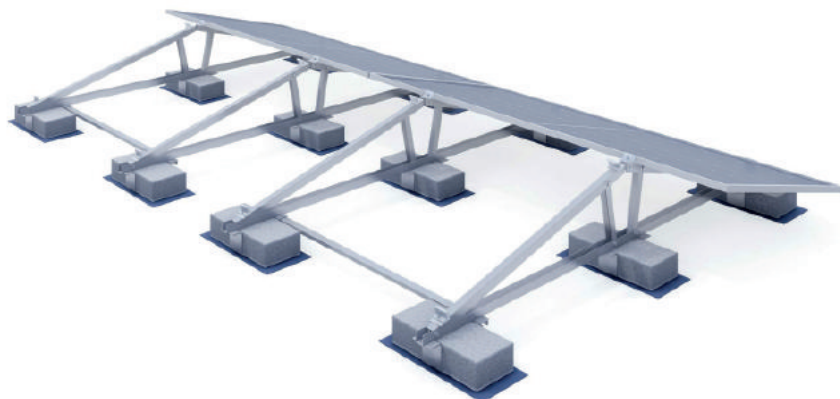
The mounting system is designed for installing PV modules on flat roofs.



Reduced material consumption and simplified logistics. No need for additional components. A reliable structure with high load resistance.



Zinc coating ensures long-term durability of the solar plant.



Characteristics:

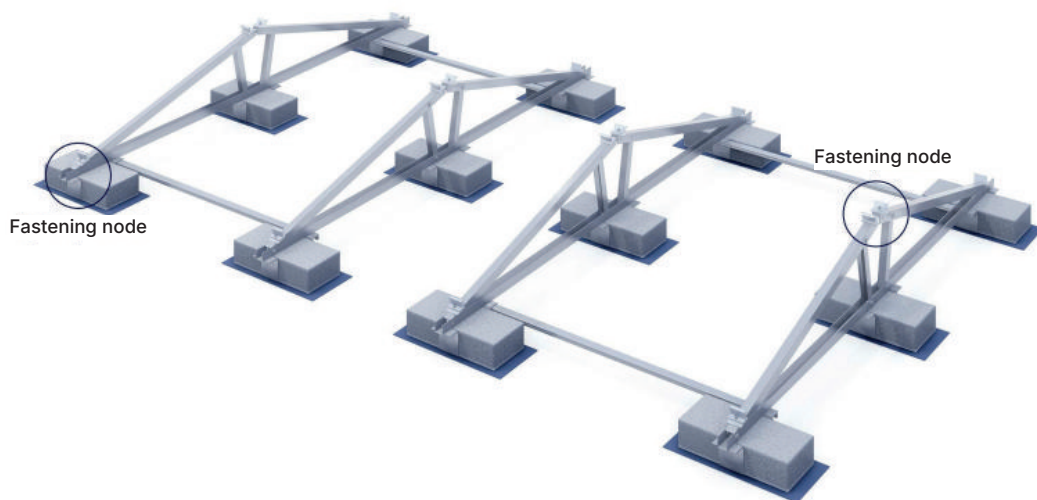
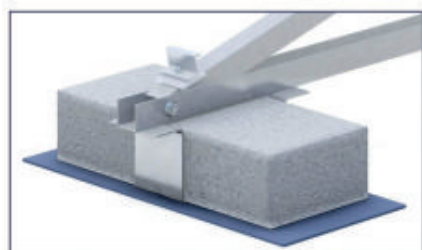
Angle of inclination of the PVM	Up to 20°
Angle of inclination of the roof	Up to 10°
Type of attachment to the roof	Ballast-mounted

Fixation options:



Landscape

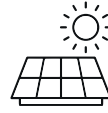
Brackets:



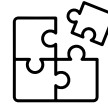
Constituent elements:



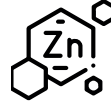
On-ground mounting system SMS-212



Two-way ground train design for storage PV modules in two rows.



Fast installation at an optimal price thanks to simple connection without the need for additional components. A reliable system with resistance to loads.



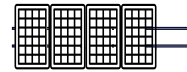
Zinc coating is the key to the durability of the PV farm.



Characteristics:

Angle of inclination of the PVM	15°-45°
The number of piles rows	2
The number of PVM rows	2

Possible PV modules orientation:



Portrait

Foundation options:



Ramming



Ramming with concreting



Concreting



Installation on concrete blocks



Anchoring piles

Application features of profiles with different sections:

C
Steel C-profile



Z
Steel Z-profile

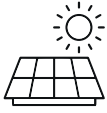


L
Steel special profile



R
Steel perforated rail-profile

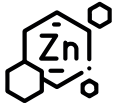




The main feature of SMS-212 SMART is using of rails made of perforated profile 41x41. Lightweight and reliability are combined in a new mounting system.



Fast installation at an optimal price thanks to simple connection without the need for additional components. A reliable system with resistance to loads.



Zinc coating is the key to the durability of the PV farm.

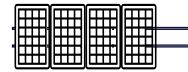
On-ground mounting system SMS-212 SMART



Characteristics:

Angle of inclination of the PVM	15°-45°
The number of piles rows	2
The number of PVM rows	2

Possible PV modules orientation:



Portrait

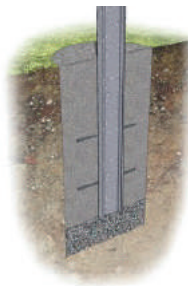
Foundation options:



Ramming



Ramming with concreting



Concreting



Installation on concrete blocks



Anchoring piles

The main connection nodes:



Fastening of main beams to piles



End fastening



Mid fastening



Rail with connection element

Options of cross-section of the perforated profile of guide beams:

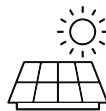


41x41



41x72

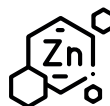
On-ground mounting system for bifacial PV modules SMS-212L



The main feature of the structure is absence of shading on the PV module back side. The height from the edge of PV module to the ground is 1.0-1.2 m, that is higher than for usual mounting systems.



Fast installation at an optimal price thanks to simple connection without the need for additional components. A reliable system with resistance to loads.

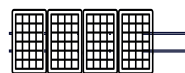


Zinc coating is the key to the durability of the PV farm.

Characteristics:

Angle of inclination of the PVM	15°-45°
The number of piles rows	2
The number of PVM rows	2

Possible PV modules orientation:



Portrait

Foundation options:



Ramming



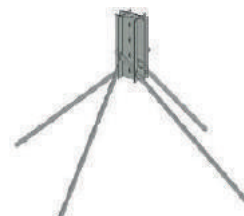
Ramming with concreting



Concreting



Installation on concrete blocks

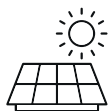


Anchoring piles

Application features of profiles with different sections:

L
Steel
Special
Profile





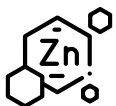
Two-row on-ground mounting system for the PV modules installation in two rows on East and West.

On-ground mounting system SMS-212 EW

East-West



Fast installation at an optimal price thanks to simple connection without the need for additional components. A reliable system with resistance to loads.



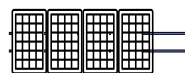
Zinc coating is the key to the durability of the PV farm.



Characteristics:

Angle of inclination of the PVM	-
The number of piles rows	2/2
The number of PVM rows	2/2

Possible PV modules orientation:



Portrait

Foundation options:



Ramming



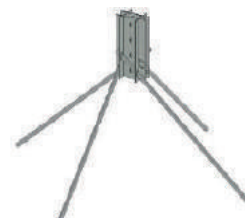
Ramming with concreting



Concreting



Installation on concrete blocks



Anchoring piles

Application features of profiles with different sections:

C

Steel C-profile



Z

Steel Z-profile



L

Steel special profile

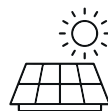


R

Steel perforated rail-profile



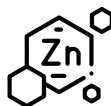
On-ground mounting system SMS-211



Single-row on-ground mounting system for the PV modules installation.



Fast installation at an optimal price thanks to simple connection without the need for additional components. A reliable system with resistance to loads.



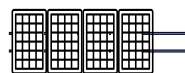
Zinc coating is the key to the durability of the PV farm.



Characteristics:

Angle of inclination of the PVM	15°-45°
The number of piles rows	1
The number of PVM rows	2

Possible PV modules orientation:



Portrait

Foundation options:



Ramming



Ramming with concreting



Concreting

Application features of profiles with different sections:

C
Steel C-profile



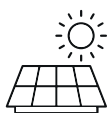
Z
Steel Z-profile



R
Steel perforated rail-profile



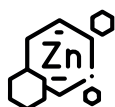
On-ground mounting system with changeable tilt angle SMS-211C



On-ground mounting system for the PV modules installation with changeable tilt angle (mechanical trackers) towards the horizon depending on the time of year.



Fast installation at an optimal price thanks to simple connection without the need for additional components. A reliable system with resistance to loads.



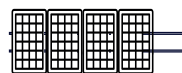
Zinc coating is the key to the durability of the PV farm.



Characteristics:

Angle of inclination of the PVM	50°, 42°, 34°, 26°
The number of piles rows	1
The number of PVM rows	2

Possible PV modules orientation:



Portrait

Foundation options:



Ramming



Ramming with concreting



Concreting

Application features of profiles with different sections:

C

Steel C-profile

Z

Steel Z-profile

L

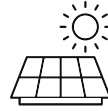
Steel special profile

R

Steel perforated rail-profile



On-ground mounting system SMS-312



Three-row on-ground mounting system for the PV modules installation in three rows.



Fast installation at an optimal price thanks to simple connection without the need for additional components. A reliable system with resistance to loads.

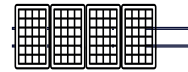


Zinc coating is the key to the durability of the PV farm.

Characteristics:

Angle of inclination of the PVM	15°-30°
The number of piles rows	2
The number of PVM rows	3

Possible PV modules orientation:



Portrait

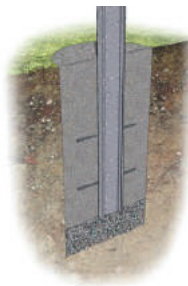
Foundation options:



Ramming



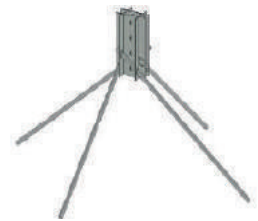
Ramming with concreting



Concreting



Installation on concrete blocks



Anchoring piles

Application features of profiles with different sections:

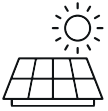
C
Steel
C-Profile



R
Steel
R-Profile



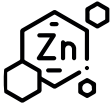
On-ground mounting system SMS-402



Four-row on-ground mounting system for the PV modules installation in three four rows.



Fast installation at an optimal price thanks to simple connection without the need for additional components. A reliable system with resistance to loads.



Zinc coating is the key to the durability of the PV farm.



Characteristics:

Angle of inclination of the PVM	15°-30°
The number of piles rows	2
The number of PVM rows	4

Possible PV modules orientation:



Landscape

Foundation options:



Ramming



Ramming with concreting



Concreting



Installation on concrete blocks



Anchoring piles

Application features of profiles with different sections:

C
Steel C-profile



Z
Steel Z-profile



R
Steel perforated rail-profile



Solar Carport

SCP-TT-412 (for concrete foundation) Designed for parking areas accommodating two vehicles, the structure also functions as a solar power plant and shading canopy. Oriented south-facing.



Configuration option:

HDG – with hot-dip galvanized profiles, preassembled, module tilt angle 50 mm

Composition (SCP-TT-412 HDG):

Columns and beams – steel S235JR, hot-dip galvanized ($\geq 50 \mu\text{m}$)
 Purlins – steel S235JR, hot-dip galvanized ($\geq 50 \mu\text{m}$)
 Fasteners – Delta / Dacroment coated
 Cover plates – anodized aluminum
 Module mounting elements – stainless steel A2-70

SCP-A-612 (for concrete foundation) Designed for parking areas accommodating six vehicles, serving both as a solar power generation system and a carport canopy. Oriented south-facing.



Configuration option:

HDG – with hot-dip galvanized profiles, preassembled, module tilt angle 50 mm

Composition (SCP-A-612 HDG):

Columns and beams – steel S235JR, hot-dip galvanized ($\geq 50 \mu\text{m}$)
 Purlins – steel S235JR, hot-dip galvanized ($\geq 50 \mu\text{m}$)
 Fasteners – Delta / Dacroment coated
 Cover plates – anodized aluminum
 Module mounting elements – stainless steel A2-70

SCP-EW-312 (for concrete foundation) Designed for parking areas accommodating two vehicles, the structure serves as a solar carport with east–west module orientation.



Configuration option:

HDG – with hot-dip galvanized profiles, preassembled, module tilt angle 50 mm

Composition (SCP-EW-312 HDG):

Columns and beams – steel S235JR, hot-dip galvanized ($\geq 50 \mu\text{m}$)
 Purlins – steel S235JR, hot-dip galvanized ($\geq 50 \mu\text{m}$)
 Fasteners – Delta / Dacroment coated
 Cover plates – anodized aluminum
 Module mounting elements – stainless steel A2-70

Agrophotovoltaic APV-112EW.1



Technical Specifications

- Total DC power: 3.8 kWp (depends on the type of PV modules)
- Total AC power (recommended): 3 kW (depends on the type of inverter)
- Estimated energy production: 3.3–5.3 MWh (depending on location)
- Specific production: 868–1386 kWh/kWp (depending on location)
- CO₂ emissions reduction: 10.7–14.8 tons (depending on location)

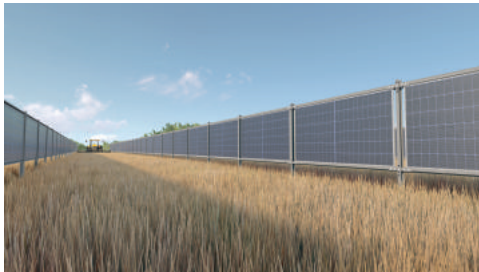
Agrophotovoltaic APV-112EW.2



Technical Specifications

- Total DC power: 8.0 kWp (depends on the type of PV modules)
- Total AC power (recommended): 6 kW (depends on the type of inverter)
- Estimated energy production: 8.0–10.9 MWh (depending on location)
- Specific production: 868–1386 kWh/kWp (depending on location)
- CO₂ emissions reduction: 22.2–31.9 tons (depending on location)

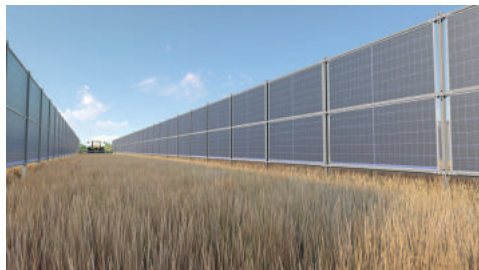
Agrophotovoltaic APV-F1



Technical Specifications

- Total DC power: 2.6 kWp (depends on the type of PV modules)
- Total AC power (recommended): 2 kW (depends on the type of inverter)
- Estimated energy production: 1.8–2.2 MWh (depending on location)
- Specific production: 698–826 kWh/kWp (depending on location)
- CO₂ emissions reduction: 9.8–20.5 tons (depending on location)

Agrophotovoltaic APV-F2



Technical Specifications

- Total DC power: 2.6 kWp (depends on the type of PV modules)
- Total AC power (recommended): 2 kW (depends on the type of inverter)
- Estimated energy production: 1.8–2.2 MWh (depending on location)
- Specific production: 698–826 kWh/kWp (depending on location)
- CO₂ emissions reduction: 9.8–20.5 tons (depending on location)

Contacts:



Iryna Dotsenko

Chief Commercial Officer

☎ +38 067 736 74 27

✉ i.dotsenko@solarsk.com.ua



Scandinavia:

Nataliia Troinykova

Export Manager

☎ +38 098 970 31 31

✉ n.troinykova@solarsk.com.ua



The Balkans:

Hristijan Mircheski

Regional Manager

☎ +38 971 289 619

✉ h.mirceski@solarsk.com.ua



Moldova, Azerbaijan, Italy:

Denys Kozis

Head of Export Sales Department

☎ +38 067 166 96 68

✉ d.kozis@solarsk.com.ua



Germany, Hungary, Czech, Slovakia, Poland, Romania

Alexander Tuschenko

Export Manager

☎ +38 067 338 05 52

✉ a.tuschenko@solarsk.com.ua



solarssk.com



solarsk



solarsk

